



Burlington Lane, London, W4 3ET

Guide Price £1,350,000

**WHITMAN & CO.**

SALES · LETTINGS · COMMERCIAL

- Semi-detached freehold property
- Potential to extend STPP
- Close to numerous amenities
- Substantial plot with large garden
- Off street parking
- No onward chain

Tenure - Freehold  
Local authority - Hounslow  
Council Tax - Band G

## THE PROPERTY

A rarely available semi-detached freehold property on a large plot with a fabulous rear garden and off-street parking located in the Grove Park area of Chiswick. The house offers the potential to extend and remodel to create a spacious family home with the existing layout comprising a 16'2" front reception room with bay window and fireplace, stunning I-shaped entrance hallway with parquet flooring, dining room with doors to the garden, fully fitted kitchen, large 74'x29' garden with mature trees, lawn and patio areas, garage, four bedrooms, family bathroom and two separate WC's (one on each floor), off street parking and a large loft. Potential to extend STPP. The house is in a super location close to numerous amenities including The River, Chiswick House and Gardens, Dukes Meadows and the shops, cafes and restaurants of Chiswick High Road. Transport links include Chiswick station (2-minute walk), local bus routes and the A4/M4 for routes in and out of London. No onward chain.

### Burlington Lane, W4

Approximate gross internal area

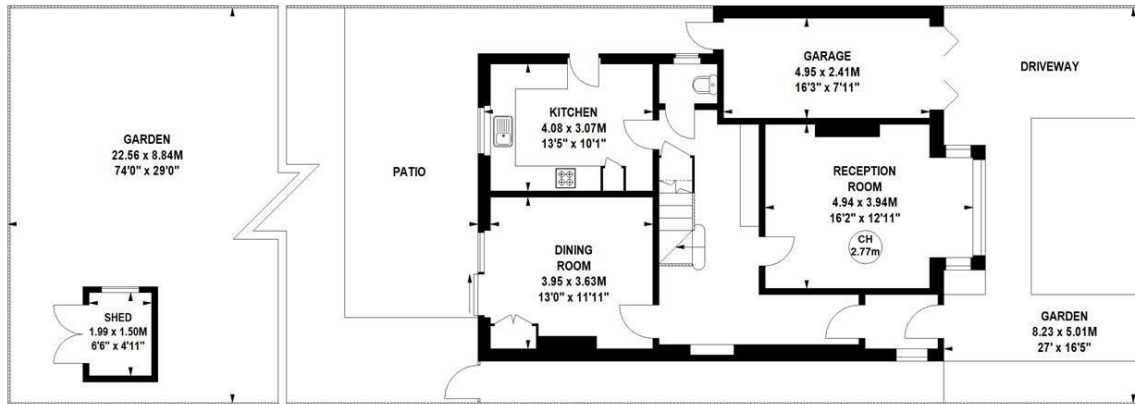
158.39 sq m / 1705 sq ft  
(Including Garage)

Garage  
11.89 sq m / 128 sq ft



First Floor

Key :  
CH - Ceiling Height



Ground Floor

Not to scale, for guidance only and must not be relied upon as a statement of fact.  
All measurements and areas are approximate only

## SITUATION



5-7 Turnham Green Terrace, Chiswick, London, W4 1RG

Tel 020 8747 8800

E-mail sales@whitmanandco.com

Website www.whitmanandco.com



MISREPRESENTATION ACT 1967

Whitman & Co. for themselves and for the vendors give notice that these particulars do not constitute any part of, an offer of contract. All statements contained in these particulars are made without responsibility on the part of Whitman & Co. or the vendor. None of the statements contained in these particulars is to be relied upon as statements or representations of facts. Any intending purchaser must satisfy himself by inspection or otherwise as to the correctness of each of the statements contained in these particulars. The vendor does not make or give, and neither Whitman & Co. or any person in their employment has any authority to make or give, any representation or warranty whatever in relation to the property.